



# e-Track.

Intelligent Key Management



# Contents

## About e-Track

Gallery .....	3
Industries We Supply.....	4
What We Manufacture .....	5

## Systems & Software

Core Key Cabinets.....	6
High Secure Key Cabinets .....	7
Mini Key Cabinets.....	8
Transport Yard System .....	9
System Security.....	10
How Our Systems Work .....	11
Accessories .....	12
e-Track Web.....	13
SaaS.....	14
Integration .....	15

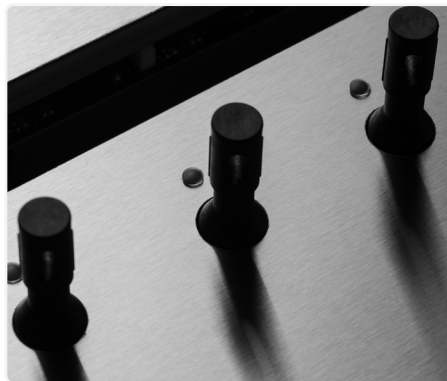
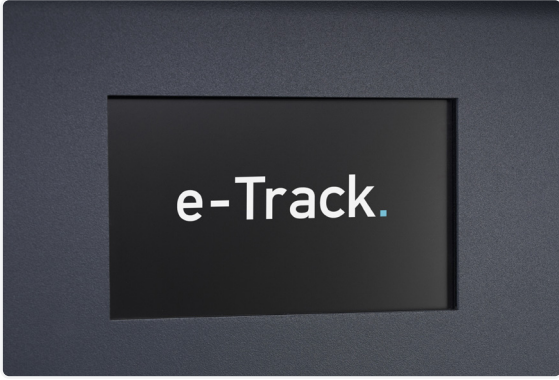
## Customers

Customer Testimonials.....	16-17
----------------------------	-------

## Costs

Return On Investment.....	18
Finance Options Available.....	19
Service Packages.....	19

# Gallery



# Industries We Supply



# What We Manufacture

At e-Track we produce the most sophisticated electronic key management systems on the market, e-Track designs, builds, installs, and supports electronic key management and transport yard systems with Software as a Service for full-scale deployment, helping market-leading operations save time, improve efficiency, and reduce risk.

We listen to the daily challenges our clients face when handling large volumes of keys, and deliver solutions that help operational teams work more efficiently within complex environments by introducing safe, compliant, efficient key control and monitoring systems.

## Results



Increased efficiency, job satisfaction and customer service levels



Decreased key loss, wasted staff time, customer and contractor waiting times



# Core Key Cabinets

Transform your key management with the Core Key Cabinet Range – designed to revolutionise key control for your organisation. Featuring a generous 100mm key clearance between the stainless-steel face panel and the door interior, these cabinets provide an ideal solution for operations managing substantial key volumes. The staggered e-Fob positions maximize hanging space, while blank tracks provide the flexibility to accommodate larger key bunches inside the cabinets. Streamline your operations with this innovative and efficient key management system.



## 20 - 3000 Keys

With 7 sizes, our core cabinets can hold a maximum of 3000 keys per controller consisting of 15 e200s.



## High Security Measures

Provides cutting-edge security measures to safeguard your keys and assets. Anti-drill high secure locks.



## User-friendly Navigation

Making key management effortless for all users within your company.



## Scalable

A modular solution that ensures the ability for growth and global, multi-site control.



## Real-time Insights

Real-time monitoring of key and user transactions, action history and much more.



## Reliable Systems

Even in demanding environments, the core cabinets provide dependable performance for securing your keys.

# High Secure Key Cabinets

The e-Track high secure range is the ultimate high secure electronic key management unit, as the **only insurance-approved UK manufactured option on the market**. Designed with reinforced multi-point locking bars, 7-lever key access, a robust 3mm steel carcass, and 6mm thick doors, they offer unparalleled protection for your keys.



## 100 - 1000 Keys

Available in 2 sizes, an e100 & e200, our high secure range offers unrivalled security.



## Insurance Approved System

The only UK manufactured insurance approved system.



## Self-closing Mechanism

Automatically closes the cabinet door when left unattended.



## Reinforced Locking Bars

Multi-point locking bars to ensure maximum protection against unauthorised access.



## Multi-Factor Authentication

Removing all vulnerability with your key storage and accessibility using multi-factor authentication.



## 3mm & 6mm Steel

Withstands tampering and forced entry. The highest level of physical security, as required for businesses at risk of organised attack.

# Mini Key Cabinets

Designed with a generous 70mm key clearance between the stainless-steel face panel and the door interior, these cabinets are perfect for retail outlets and businesses managing a smaller number of keys, yet seeking top-tier security. The staggered e-Fob positions optimise hanging space with a compact key arrangement, while blank tracks provide the flexibility to accommodate larger key groupings when needed.



## 10 - 30 Keys

Available in three sizes, an e10, e20 & e30, catering to various operational needs.



## 5 Inch Touch Screen

Smaller screen to accommodate the space efficient design.



## Space Efficient Design

Specifically tailored for offices and areas where space is at a premium.



## Cloud-Hosted Control

The same level of comprehensive cloud-hosted web control as larger systems.



## Plug-and-Play

Our intelligent key cabinets are ready for immediate use following a quick and simple installation.



## Self Installation

Quick and simple installation allows for little disruption when setting up the systems.



# Transport Yard System

e-Track solutions revolutionise safe practices at the loading dock. The Embedded Transport Yard System is designed to automate dock door operations and eliminate the risk of unsafe pull-aways by ensuring vehicle security and preventing key access until the loading process is complete and the dock door is down.



## Traffic Light System

Simple, but effective traffic light system for communication between outdoor and indoor teams.



## Anti-Tamper Alarms

Notification alarms to improve safety and prevent drive-offs at the loading bay.



## IP Water Rating

For suitable protection against rain or spraying water, ensuring longevity.



## Auto Night Lights

Safety and security during night time loading, reducing unnecessary risks.



## Locking Key Slots

Locking key slots to prevent key retrieval until loading is complete.



## Improved Efficiency

Save an average of 10 minutes on every single load.

# System Security



All of our cabinets are designed with security as a priority. Ensuring all keys placed into the systems are secured and can resist any attempts of forced entry. The lock used in our cabinets have a **tensile load of 5800NM**. This means any manual entry attempt will be unable to force the cabinet open.

Additionally our high secure cabinets come with turned steel locking bars that are threaded onto self clinching high strength rods, which trap the door into the cabinet carcass and provide ultimate security from physical attacks.

The cabinets outer frame comes reinforced with 1.5mm mild steel for Core and Mini ranges, and a 3mm steel carcass with 6mm steel door for the High Secure range.

Cabinets with clear doors use a 6 and 8mm polycarbonate window depending on the cabinet site, ensuring a virtually unbreakable screen. Providing an added layer of protection for sensitive environments but where visual key audits still need to be done with the cabinet closed.



Image of the high secure locking bars



Image of the high secure automatic closing mechanism



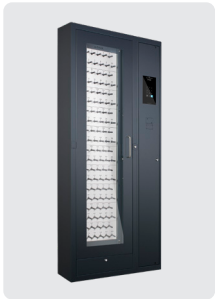
# How Our Systems Work

## Setup



1. Keys are assigned e-Fobs and then specific slots for static management or specific cabinets for dynamic management.
2. Users enrol at the cabinets via Pin, ID card or Fingerprint biometrics unless otherwise enrolled by an integrated access method.

## Key Management Systems



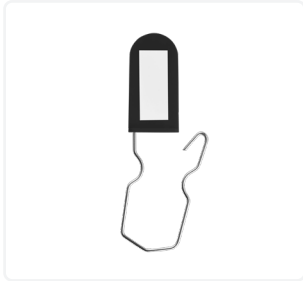
1. Users ID themselves at the cabinets, the door and selected key unlocks for removal.
2. The event is logged recording user id, time and key details for accountability.
3. On return, keys are inserted into their slots, highlighted by return LED indicators, scanned, logged and reported back to the web software.
4. Any keys overdue or keys not moving over a maximum period of time are flagged to admins via the control centre in the web app.

## Yard Transport System



1. A HGV is secured at the loading dock and the vehicle keys is deposited into the key box. Along with a site key for any safety equipment where applicable.
2. Indoor controller signals that the vehicle is ready and the environment is safe to begin loading.
3. Dock door controls are released and the dock door can be opened for loading.
4. Once loading is complete and the dock door is down, keys are released at the key box from a controller push button or remote transport office.

## Accessories



### Anti Tamper Seals

Our anti-tamper seals are designed to ensure no unauthorised removal of an item or a key from a bunch. Attach directly onto an eFob to secure your keys in place in the e-Track system. Seals are available in white, blue, yellow, orange, green, and red.



### Cable Seals

150mm long flexible and durable cable seals are designed as a more secure way to attach a permanent key or item onto an eFob to secure your keys in place in the e-Track System. Available in red and black.



### e-Fobs

The e-Fob is the central component of any e-Track key management system. Produced in 50% glass filled plastic with an aluminium handle option, our RFID e-Fobs are extremely durable and come with a lifetime guarantee.



### Reusable e-Fobs

Our reusable e-Fobs allow you to clip keys on without a seal, and locking keys in place once in the cabinet. Great for those with a high turnover of keys or for users who want to regularly remove keys from the e-Fob. Such as estate agents or users managing stock of spare keys.

# e-Track Web

## Web App

e-Track's all-encompassing solution ensures a seamless and efficient process for the booking and management of access to vehicles and buildings. Connected to e-Track web with analytics provides a complete overview of the key and user performance.



### Fleet Management

Our web software can easily manage multiple vehicles while keeping track of key logs.



### QR Code Stickers

For assets not requiring keys, QR codes can be applied to them, incorporating them into the system.



### WIP Tracker

Integrated tracking of vehicles within a business process to identify location and status at a glance.

## e-Track Touch

The software for these screens has been created with simplicity and ease in mind, with the ability to take or return a key at the click of a button and the secure login feature to ensure security of your keys.



### Return Questions

Configurable return questions for when a vehicle or asset is returned, for more in-depth information.



### VoR for Fleet

All VoR cars can be released at the same time to help with repairs, improving efficiency.



### Key Search

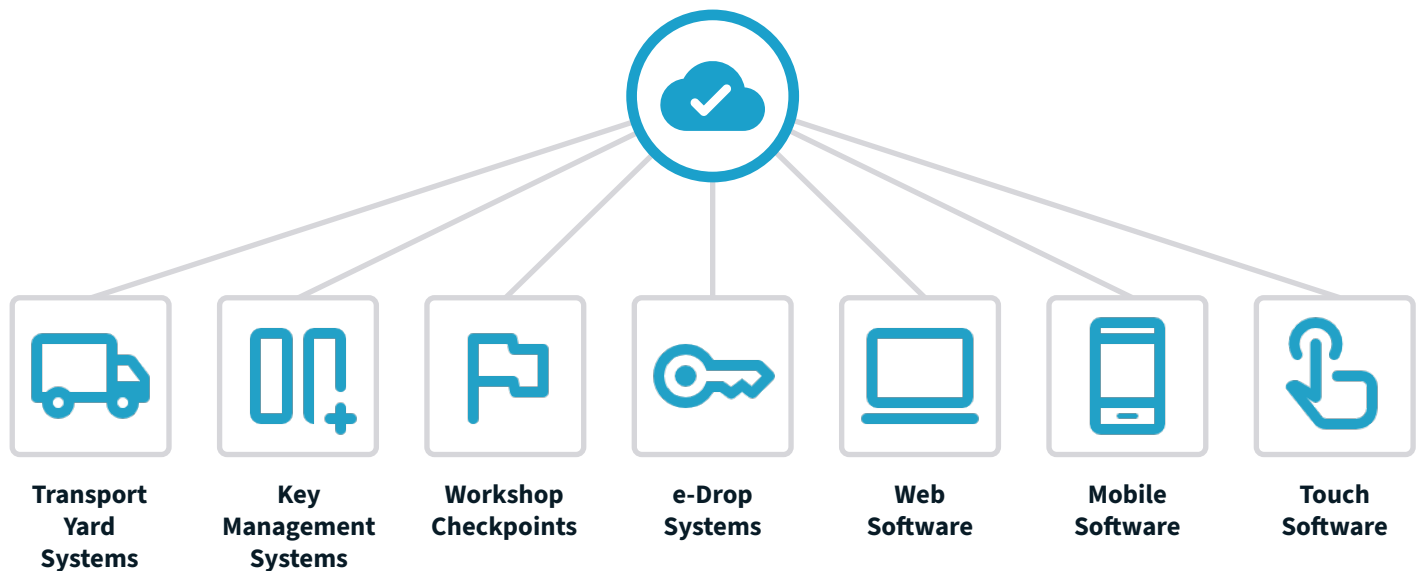
With a functional touchscreen user interface for easily identifying key locations.

# SaaS

**Opting for our Cloud Hosting solution** for your electronic key management system not only **guarantees resilience**, but aligns your data hosting with secure data processing best practices and General Data Protection Regulation (GDPR). Our SaaS offering provides 99.9% uptime and allows continuous improvement/continuous development (CI/CD) methods to software deployment.

To ensure the highest level of safeguarding, our cloud infrastructure undergoes **regular pen testing** to identify and rectify any potential vulnerabilities so that your software and transactional data remains protected from potential threats. The robust infrastructure also means your critical **data and software are seamlessly accessible** for client use and access to immediate support services allowing you to manage your key systems efficiently, regardless of location or time zone.

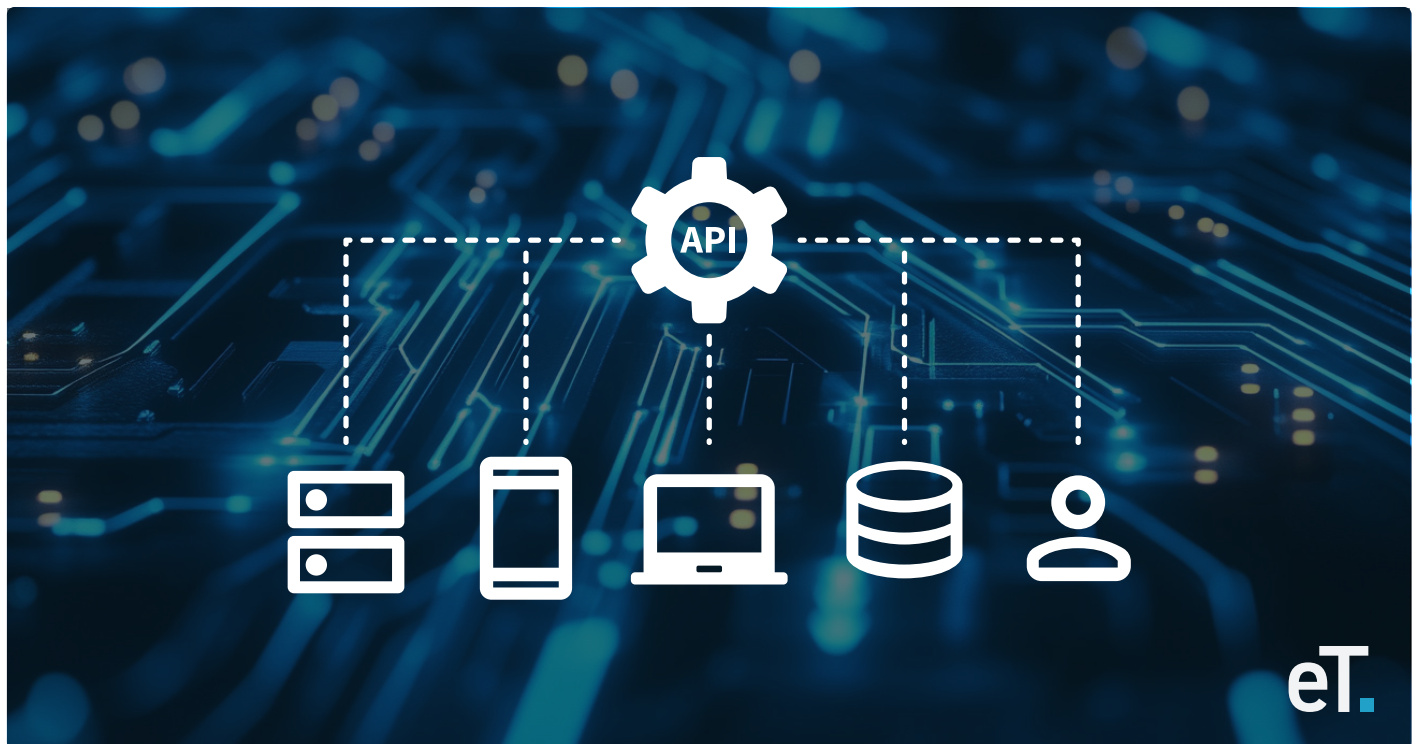
- ➡ AWS hosting by certified practitioners
- ➡ e-Track proactively manages and globally updates all systems simultaneously
- ➡ Reduces outdated software infrastructure which increases the life span of our systems
- ➡ Rapid set up with installation and dedicated client environment testing



# Integration

The e-Track software platform includes an open **REST API** that enables integration between external systems and e-Track asset management, including creating, updating and removing assets and users. The API is fully documented and easy to use. We also offer **webhooks** as a method to update systems based on events that happen within the e-Track system - such as recording asset movements in real time.

We can integrate with all kinds of systems like fleet and dealerships management, access control and booking systems. Development support is available, and custom integrations can be delivered upon request.

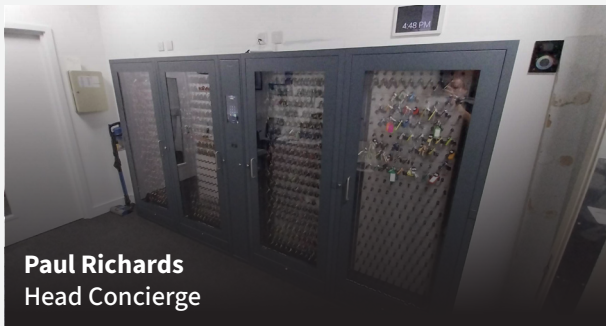


## Customer Testimonials

### ballymore.

“Embassy Gardens, Ballymore has seen a significant improvement in both efficiency and security after adopting the e-Track key management solution. The system’s full audit trails and user acceptance ensure traceability and reduces risk, making it ideal for concierge operations that require secure handling of tenant keys.

e-Track’s responsive support team have made a noticeable difference in our day-to-day operations, enhancing safety and accountability across our developments. I would also like to mention Prez, who was an absolute star in training new users on how to operate the system”



“The e-Track cabinets and software allow us to achieve what was not previously possible by providing vehicle and key locations as well as security of crucial keys.

e-Track has changed the dynamic of Big Motoring World by increasing our efficiency when searching for keys within the business. A huge issue for the company was time wasted looking for a certain key and the main pain point we wanted to solve. This has been solved using the systems supplied and setup by e-Track.”





## Customer Testimonials

### JLR | Hatfields

“At Hatfield’s, we have struggled with our manual key management processes for some time and decided, after reviewing the market, to implement the e-Track solution, which has been an absolute game changer for us. The key management cabinets and easy-to-use software have introduced accountability where key usage is concerned, hugely improving efficiencies across our multiple locations, and making the job easier for our teams.

I highly recommend the e-Track product and team to any peers in the market looking at ways to increase team performance and customer service levels.”

**Jay Grant**  
Head of Business



“We have been extremely satisfied with the e-Track key management system, it was easy to install and it’s simple for our staff to use.”



“The e-Track system suits our needs perfectly. We are able to track key movements and easily locate keys across the entire business.”

# Return on Investment

## Automotive ROI Example Calculation for 200 keys

Using our ROI calculations we are able to provide a rough estimate on how much money one may lose yearly looking for keys and provide you with yearly savings and an ROI guide if you purchase a key cabinet from us. **Any calculations or costs seen in this brochure are strictly estimates and do not reflect exact pricing.**

- Investment returned within a year!
- The busier the dealership, the quicker the return.

### Estimate Time Savings:

- Average time spent searching for keys: 5 minutes per day
- Number of employees using keys: 20
- Working days per year at a 6 day operation: 312
- Total time saved annually:  $5 \times 20 \times 312 = 31,200$  minutes or **520 hours**
- Average hourly wage: £18
- Annual time cost savings:  $520 \times £18 = £9,360$

### Key Replacement Cost:

- Average Car Key Replacement Cost: £500
- Lost Keys Per Year: 12
- Key Replacement Cost Per Year:  $500 \times 12 = £6,000$

### Investment Cost:

- Electronic key cabinet: £15,000

**Annual total cost savings:**  
**£9,360 + £6,000 = £15,360**

### ROI Calculation:

- Direct Return:  $£15,365 / £15,000 = 1.024$

### Indirect Returns

Increased Labour Charged

Increased Customer  
Satisfaction

Increased Employee Job  
Satisfaction



## Finance Options Available



### Short Term Hire

Short term hire includes a 1-2 year payment plan which includes installation and removal in the price. This plan is ideal for construction sites and other temporary sites.



### Hire Purchase

A hire purchase is a 2-5 year plan available at 7% p/a on the overall total. For example a £10,000 system over 2 years will cost £11,400. This is ideal for clients looking to spread the cost over a longer term.

## Service Packages

Benefit / Features	Standard	Enhanced	Enterprise
Web & Touch Licence	✓	✓	✓
Support Hours (UK)	Weekdays 09:00 - 17:00	Weekdays 07:00 - 19:00 Weekends 09:00 - 17:00	24/7
Security Updates	✓	✓	✓
Annual Hardware Maintenance	✓	✓	✓
On-Site Training	✓	✓	✓
Extended Hardware Warranty		✓	✓
Dedicated Account Manager		✓	✓
Proactive Monitoring		✓	✓
Reporting & Bespoke SLA			✓



0121 647 2770 | [sales@e-track.com](mailto:sales@e-track.com)  
1 Homer Rd, Solihull, West Midlands B91 3QG